



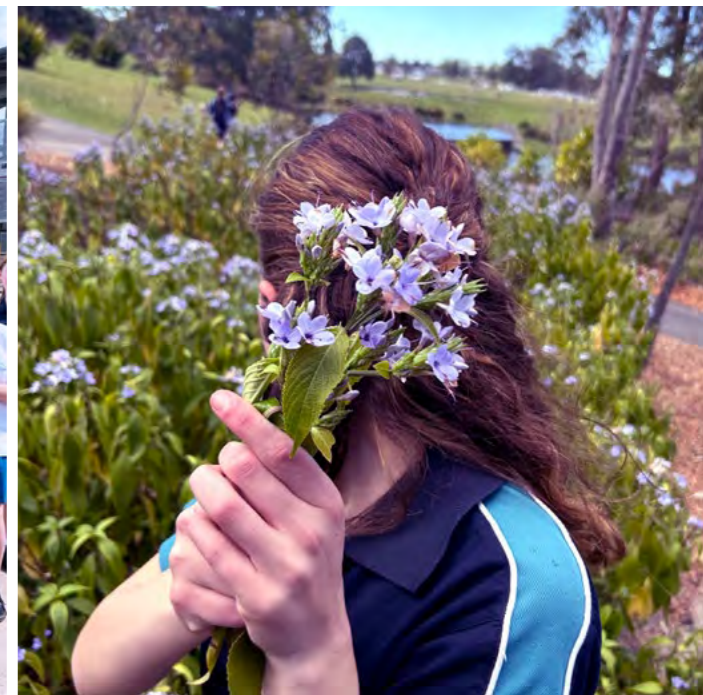
Welcome

TO Kariong Mountains High School

Established 2010

Take a
PEEK
at your
local high
school

Kariong Mountains High School is a comprehensive school catering to students from Years 7 – 12.

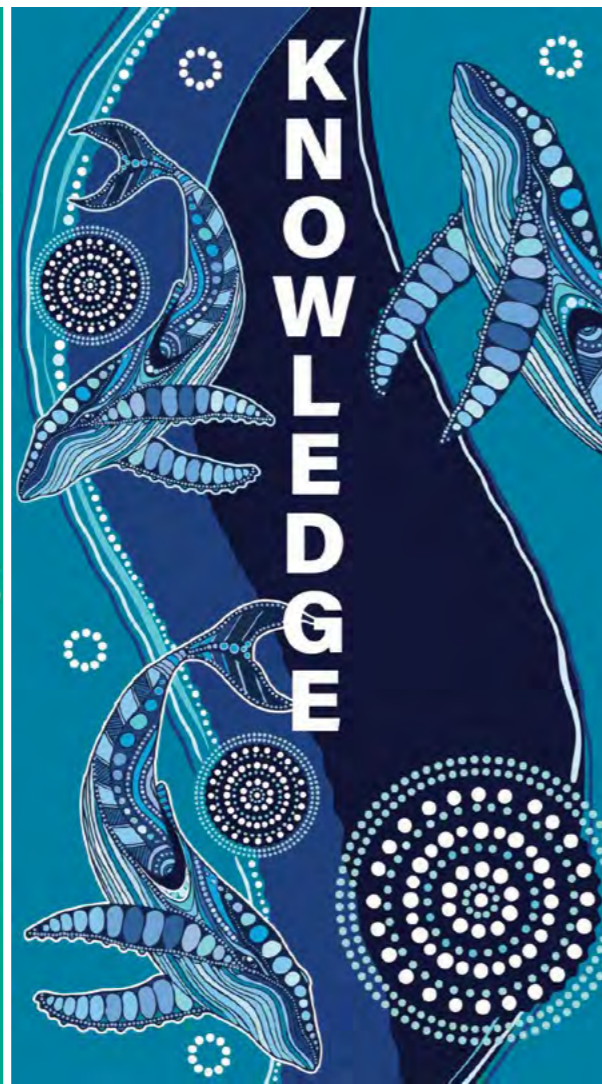


Our School Values



Unity

Building connections and a sense of belonging.



Knowledge

Providing an enriched academic and vocational culture with a holistic approach.



Respect

Actively modelling and reinforcing positive engagement with the whole school community.

Our Vision

Kariong Mountains High School Vision Statement

Kariong Mountains High School is a united educational community, where students, staff and families are known, respected and cared for. Every student is provided the very best curricular and extra-curricular opportunities, to maximise their learning potential. Successful post school pathways sit at the forefront of planning and growing with all our students, realised through building strong educational connections with our learning community, tertiary and vocational institutions, business and industry.

We take great pride in our school's core values 'Unity Knowledge Respect', which form the essential foundation for supporting and fostering student growth.

Our Aim

At Kariong Mountains High School, we are passionate about fostering student growth, with the aim that each student graduates with **skills** to embark on their next phase in life:
Capable · Life-long learner
Positive self-regard · Adaptable



Enrolment

How to enrol at Kariong Mountains High School

In NSW government schools, the transition from Year 6 to Year 7 is a two-step process, which starts with the [Application to Enrol form](#), also referred to as the 'moving to high school expression of interest form'. Scan the QR code to learn about the process ([or click this link](#)).



Scan QR code for information on moving to high school.



Scan QR code to visit online enrolment for KMHS.

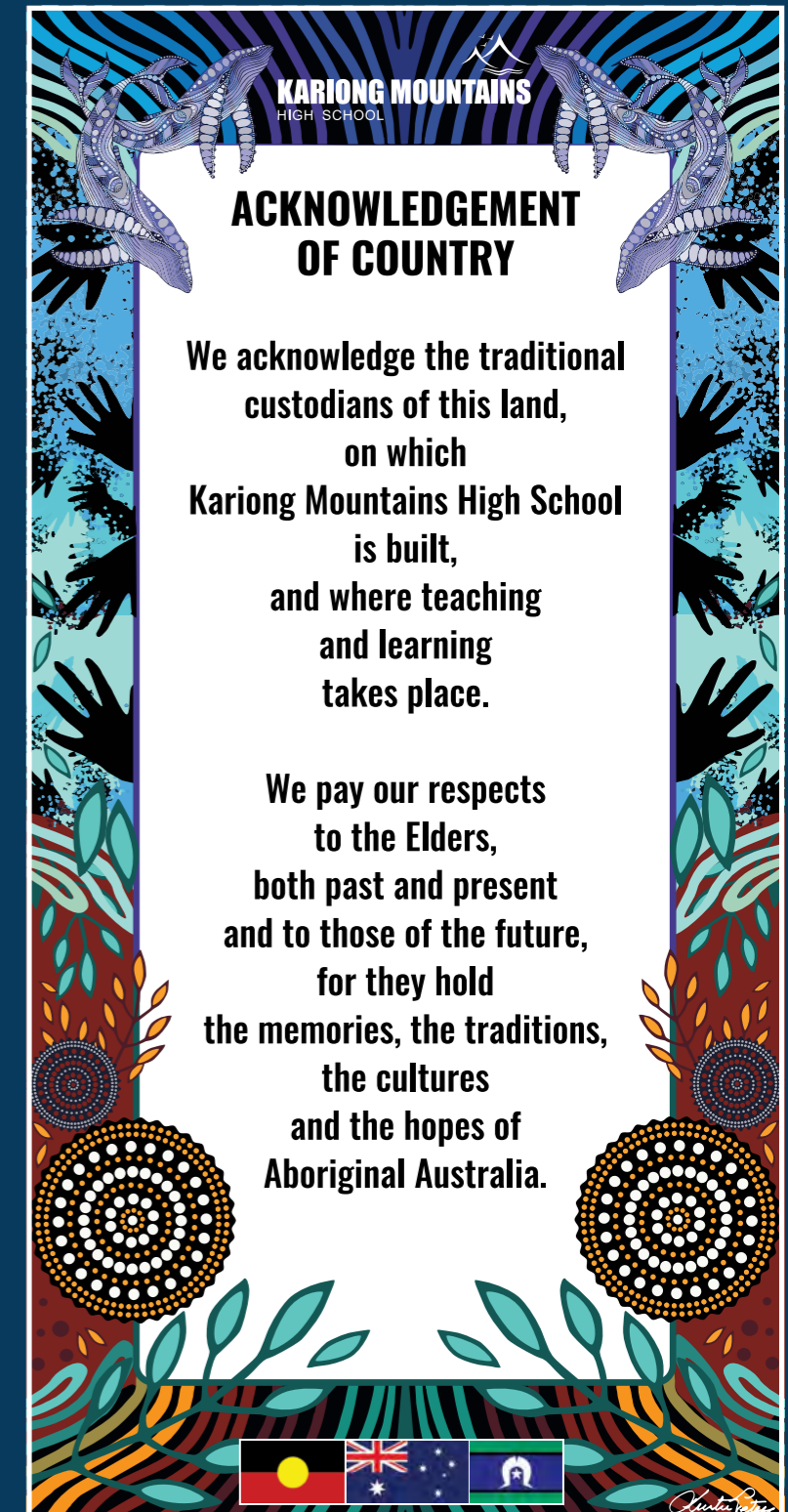
STEP 1: Submit your child's online application to enrol (*expression of interest*) a printable PDF is available to download if you cannot or prefer not to submit online.

STEP 2: If you receive an offer from our school for placement into Year 7, follow the link and instructions in the email to complete the application.

If you did not submit an expression of interest but wish to enrol, you can scan the QR code to start a new application to our school.

Contact KMHS on 4340 0246 if you:

- are considering the Selective Class for your child
- wish to submit an 'out of area' enrolment application to our school
- have special needs or questions you wish to discuss.



Transition to high school

**Enjoy a
happy start
to Year 7 at
KMHS**

At Kariong Mountains High School, we understand the importance of a confident and calm start to a new school setting.

Our transition / welcome program is designed to make this process a smooth and happy one for new students.



Situated in the beautiful Mount Penang Parklands, our school provides a wide range of learning opportunities and access to nearby gardens and sporting fields.

Key Dates for families with students starting **Year 7 in 2026**

MARCH 2025: Expression of Interest (EOI) open 3 March and close 28 March. Forms to be completed online by parents.

4th MARCH 2025: Year 6 Information Evening @ Kariong Mountains High School.

4th APRIL: Selective Class applications due.

APRIL 2025: EOIs are reviewed by the high school. All eligible students receive offer to complete and submit enrolment application

MAY - AUGUST 2025: Parents finalise and submit enrolment application, within specified time.

SEPTEMBER 2025: Student placements confirmed.

2nd DECEMBER, Term 4 2025: Orientation Day for incoming (2026) Year 7 students.

Uniform Shop is open extra days during the holidays, to help parents organise uniform for the start of Term 1.

Monday 2 February 2026: First day of Term 1 for Years 7 - 12 students.

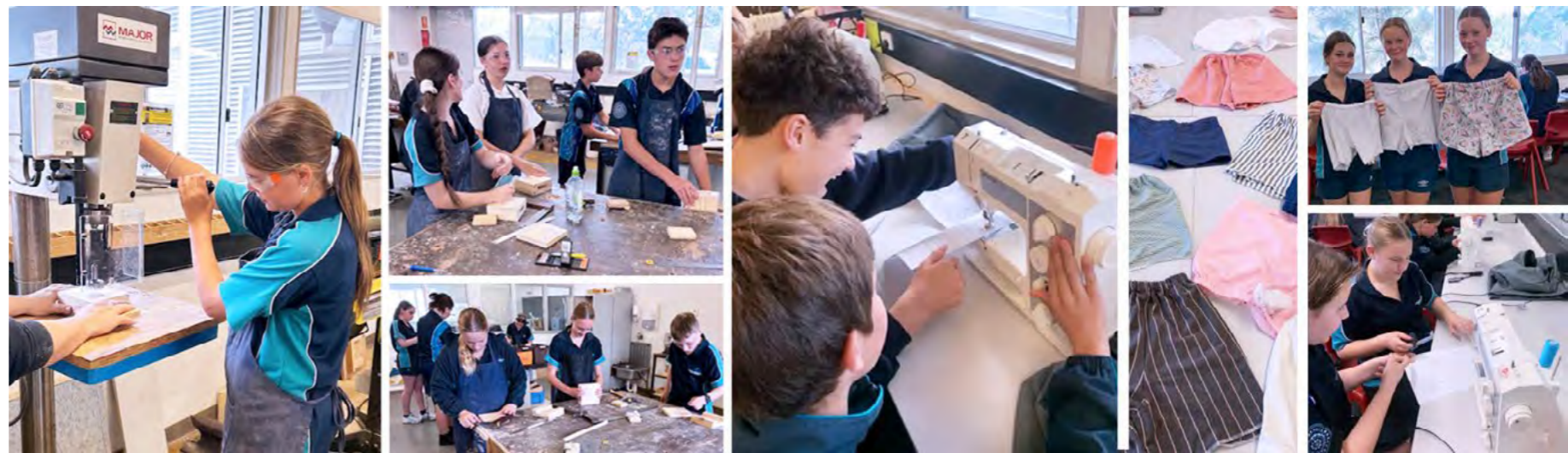
Learning at KMHS



At KMHS, our passion is all about:

- Providing a balanced program of curricular and co-curricular learning opportunities, that encourage all students to explore and develop their passions and aptitudes.
- Actively engaging with contemporary educational research into *“what works best”* in our programming and classroom practices
- Developing and promoting wellbeing approaches that recognise the unique potential of each child and the importance of positive relationships between staff, students and parents/carers.
- Creating learning and physical experiences that foster student voice and leadership and encourage development of transferable skills, habits and dispositions that will make our students successful global citizens.

Every student matters at KMHS!



Our commitment is to build lifelong learning skills through:

- Optimising individual learning through supportive programs.
- Providing enriched learning opportunities for high potential and gifted students.
- Growth mindset.
- Building success for all students.
- Technology fluency for future focused learners.

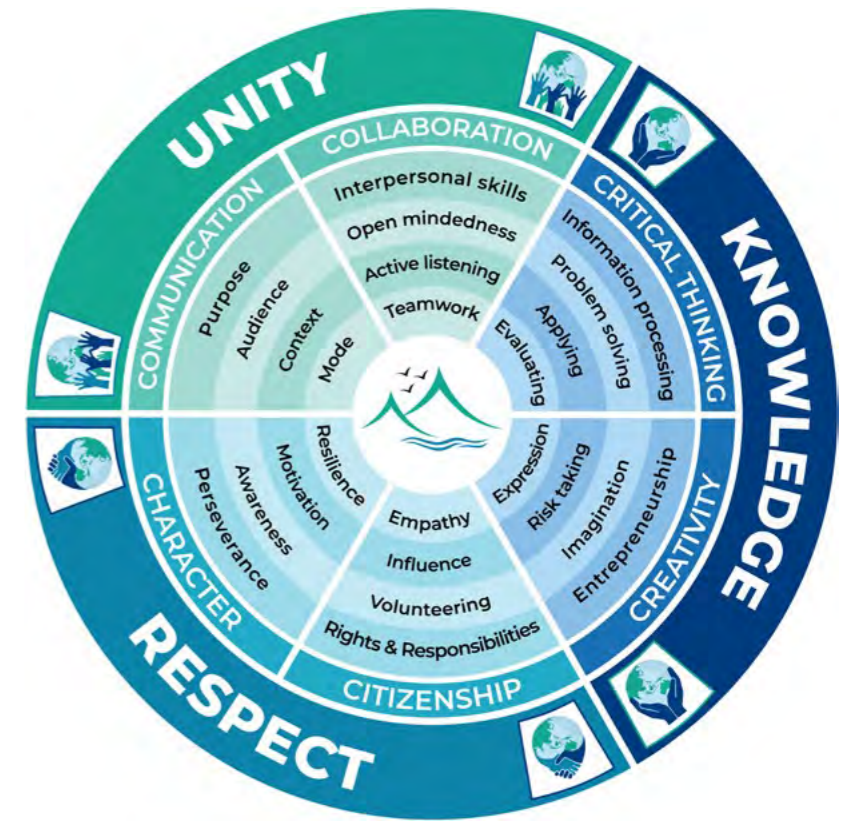
Curriculum

Stage 4 (Years 7-8)

Students study the mandatory subjects, with the Language Other Than English option being Japanese. Additionally, students undertake an integrated future-focused program of learning called 'Acquired Skills, Applied Projects' (ASAP).

Students in Years 7-12 study subjects as determined by the NSW Education Standards Authority (NESA). Parents/carers can access information about the curriculum from the following websites:

educationstandards.nsw.edu.au | education.nsw.gov.au



Stage 5 (Years 9-10)

Students choose three elective subjects, in addition to the mandatory curriculum. We offer a wide range of subjects, with student choice being a key factor in determining final selections.

Stage 6 (Years 11-12)

Students are able to choose from a wide range of courses, with English being the only compulsory area of study. Additionally, students can undertake Vocational Education Training (VET) in Construction, Financial Services, Hospitality, Music Industry and/or Virtual VET programs, or participate in school-based apprenticeships and traineeships (SBATs), giving them dual qualifications at the HSC level.



Targeted Learning opportunities and Programs

to support *every* student on their journey through high school.

2026 Stage 4 Academic Stream Class

APPLICATIONS OPEN

SUBMIT BY 4 APRIL

Available in Stage 6

2026 Certificate III **Music Industry** at Kariong Mountains High School

Open to Students from other schools

CAREER PATHWAY OPPORTUNITIES

Find out More...
Contact Kariong Mountains High School on: 4340 0246 or email: kariongmtn-h.school@det.nsw.edu.au

WEDNESDAYS: 3:30 - 6:30pm

Kariong Mountains High School is one of the lucky EPP schools on the Central Coast.

EPP
Educational Pathways Program
Go.Forward

NSW GOVERNMENT

Did you know?
What is EPP?

Information for parents at our local feeder schools
a Public School Exclusive Initiative!

Educational Pathways Program [EPP] is an innovative program designed to improve education and career outcomes for young people, by introducing NSW public high school students to a range of vocational training, employment and university / tertiary pathways.



Fast Facts about EPP:

- Future Focused: Career planning with success.
- Tailored support and mentoring for students.
- Career pathway options at ALL levels.
- Entrepreneurial skills: STEM, cyber security, solution-finding & IT in focus.
- Links with industry: Real work opportunities targeting skill shortages.
- Innovative programs aimed at successful transition to work and/or further education.

EPP Initiatives

- TAFE NSW Start Your Future
- Job readiness workshops
- Apprenticeship and traineeship head start
- Educational Pathways VET Ambassadors
- Enhancing SBAT engagement
- Innovating careers education

Find out more:



Checklist for families

Things to do and keep an eye out for:

- ✓ Complete the 2-step ENROLMENT application process.
- ✓ Keep an EYE OUT for COMMUNICATIONS from KMHS, which provide additional information and invitations to upcoming events.
- ✓ GALA DAYS help Stage 3 students prepare for high school.
- ✓ Parent information evening in Term 4 is an opportunity to ask questions, pre-order uniform & receive the information pack.
- ✓ YEAR 7 CAMP DEPOSIT payment is due in Term 4.
- ✓ STATIONERY PACKS can be ordered online, through school supplier (see information pack in Term 4) or purchased privately.
- ✓ Apply for STUDENT OPAL CARD (if needed) in time for school start.
- ✓ Organise school shoes (ideally, wait until January to do this, to avoid feet outgrowing new shoes).
- ✓ If purchasing a LAPTOP for your child to bring to school, check that it meets BYOD requirements.
- ✓ A Laptop DAY LOAN system is available for students who need to borrow a device (parent and student must sign a contract for the year).



UNIFORM SHOP OPEN
GET READY FOR TERM 1

Tuesdays & Fridays: 8-9am

Holiday Opening Times announced in Term 4

Access order form and more information on school website.



KMHS

Quick Guide for Parents

ACCESS PARENT RESOURCES ON THE SCHOOL WEBSITE

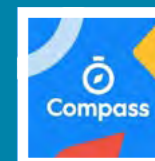
(click link above or scan the QR code)



KMHS FACEBOOK PAGE PROVIDES A SNAPSHOT OF DAILY ACTIVITIES AND REMINDERS ABOUT UPCOMING EVENTS.



THE COMPASS PARENT PORTAL
Provides access to student attendance, notes, timetables, reports and more
(note: registration and portal access is only available once student is formally enrolled)



Contact Us

PHONE

4340 0246 Office hours 8:15am - 3:30pm

EMAIL

kariongmtn-h.school@det.nsw.edu.au

ADDRESS

10 Festival Drive, Mt Penang Parklands,
Kariong NSW 2250

REGION

Kariong Mountains High School is a part of the Mooney Mooney Principal Network.

*Regional North Operational Directorate
Tuggerah Office, 14 Pioneer Avenue, Tuggerah NSW 2259. Phone: 02 4357 5300*