

NEWS



Week 9
Term 1
28 March, 2025

KARIONG MOUNTAINS HIGH SCHOOL

Unity ✓ Knowledge ✓ Respect

4340 0246

IN THIS ISSUE:

FROM OUR PRINCIPAL	PAGE 2
DEPUTY PRINCIPAL'S REPORT	PAGE 3
MATHEMATICS FACULTY NEWS	PAGE 4
PBL NEWS	PAGE 5
SCHOOL ORGANISATION	PAGE 6
STUDY SKILLS - HANDY TIPS	PAGE 6



School Attendance on the RISE at KMHS!



LET'S

CELEBRATE



Eliza Dowse, our Regional North SASS Excellence Award recipient. Well done and well deserved!

UNIFORM SHOP



OPEN DURING SCHOOL TERM
8-9AM
TUESDAYS & FRIDAYS

CURRENT HOUSE POINTS

BOUDDI	DHARUG	GIRRAKOOOL	POPRAW
3507	3283	3206	3337

CALENDAR

MONDAY

31 March

Year 12 Half-Year Exams

7 April

TUESDAY

1 April

Year 12 Half-Year Exams
Junior Dance Audition

8 April

CC Careers EXPO

WEDNESDAY

2 April

Year 12 Half-Year Exams
Dream Builders
KMHS Cross Country

9 April

Dream Builders
Life Changer Year 7

THURSDAY

3 April

Year 12 Half-Year Exams
Luna Park Yr 9
Life Education Yrs 7, 8, 9
Luna Park - Year 9

10 April

FRIDAY

4 April

Catch-up Yr 12 Exams
Marine S. Snorkelling

11 April

White Card Course



FROM OUR
PRINCIPAL
Welcome to Week 9!

Regional North SASS Excellence Awards

This Week, I had the absolute pleasure of attending the *Regional North SASS Excellence Awards Ceremony*, to celebrate KMHS office staff member, Eliza Dowse, recognising her invaluable work at our school. A truly deserved award, outlined in the following statement about Eliza's contribution to making KMHS a great place.



Eliza has been a valued and greatly respected staff member at Kariong Mountains High School over the past ten years.

Eliza positively engages with students, staff, and the wider community through her daily interactions in the front office. By fostering an inclusive environment, Eliza's positivity contributes to a culture where every student feels valued and encouraged.

Eliza's integrity is evidenced in her transparency and ethical approach to her work. She consistently communicates openly with both students, parents and staff creating an environment of trust and support. Eliza addresses challenges head-on, making decisions based on fairness and equity, which reinforces trust among her colleagues and the school community.

With a decade of service in public education, Eliza is a strong advocate for equitable access to quality education. She works to ensure that all students, regardless of their background, have the resources and support they need to succeed.

In summary, Eliza Dowse's contributions to Kariong Mountains High School are marked by her enthusiastic service, unwavering integrity, and relentless pursuit of excellence. Her proactive commitment to public education not only enhances the educational experience for students but also strengthens the overall school community. Additionally, she is also a brilliant human!!!

Thank you, Eliza, for your work and what you bring to Kariong Mountains each day.

School Development Days Term 2

The Department has scheduled two school development days on 28th and 29th April at the start of Term 2. Day one will be a professional learning day for all staff on the High Performance and Gifted Education (HPGE) policy and day two will be a teacher directed development day.

All students will return for the start of Term 2 on Wednesday 30th April.

New School Planning Cycle

KMHS executive team has been busy throughout this term, working on the introduction of our school's new improvement plan. The three strategic directions that the school will be planning towards are:

1. Student Growth and Attainment
2. Learning Culture
3. Planning for Future Success.

The KMHS Annual Report will be published at the end of this term.

Year 7 Camp 2025

This week, we farewelled and welcomed home Year 7, as they participated in their first high school camp. Thank you, to parents for supporting your children to attend and staff members Mrs Doyle, Mr Chamberlain, Mrs Miller, Mr O'Mahony, Mrs Bell and our fantastic SLSO staff, for taking time away from their own families to attend. The next newsletter will have a detailed account of the fun that was had.

Let's Celebrate Attendance

I shared some significant data with staff this week, highlighting our attendance and how positively the school is tracking. This uplift is also correlating with an improvement in **student belonging** data. This is certainly a collective effort by everyone with high expectations and building positive relationships at the core of our work. Thank you, to all parents and students, for your support and

ongoing efforts.

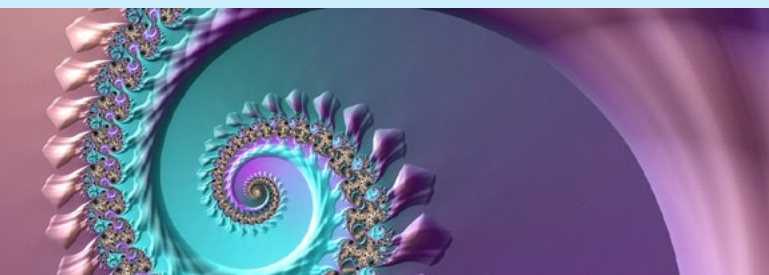
NAPLAN - well done!

Congratulations, Years 7 and 9 on your outstanding effort and attempt at NAPLAN last week. Also, a thank you to Mr Blyth for his care and meticulous organisation of this testing period. I look forward to sharing results with our community next term.

Shave For a Cure

Last week, our school community dug deep for Shave for a Cure, raising \$464. Thanks to Mr White, Mr Blyth, Kye and Hayden for sacrificing their locks for charity!!!

Mrs Donna James
Principal





DEPUTY PRINCIPAL'S REPORT



\$464 Fundraised in support of the World's Greatest Shave

Term 1 - Week 9

Students are required to complete several assessment tasks in each of their subjects throughout the year. For students in Years 10 to 12, the rules for assessment submission are more strict and explained in the policy and schedule booklets they signed for earlier in the term.

When students fail to meet the requirements of an assessment task, for example, submitting late or not all, they are issued with an **'N' Warning** letter, which provides details of the task and how the student can rectify the problem. Students are also required to demonstrate diligence to satisfactorily meet the requirements for each course. This includes attendance and completing class work. **'N' Warning** letters can also be issued for not demonstrating due diligence.

If students fail to meet the requirements of a course(s), they will be **'N' Determined**, which means they will not be eligible for a **Record of School Achievement (RoSA)** in Year 10 or the Preliminary, and not eligible for the HSC. Students in this position will have had support provided to them throughout the year with several opportunities to redeem themselves.

Access the school [Assessment and Reporting Policy](#) and [assessment booklets](#) (for each cohort) on our website. If you have any questions regarding this, please feel free to contact me.

Positive Behaviour for Learning

As part of **PBL** (Positive Behaviour for Learning), we have a reward system that involves \$10 canteen vouchers.

For each **Week A**, students in Years 7 to 9, who have positive memos on Compass for the term are entered into a draw. Their names appear on a spreadsheet with a random number generator used to select the lucky student. The same process occurs for students in Years 10 to 12 for **Week B**. The winners are recognised in each newsletter.

Students, who have been in class for 95% or more in a week, are also eligible in another draw for a \$10 canteen voucher. The check-in class of the recipient also gets to select the songs for period changes the next week.

Shave for a Cure

Thank you, to everyone who supported **'Shave for a Cure'** last week. A big well done to Mr McGilvery and the leadership team for their organisation of the event.

Mr Scott White
Deputy Principal



Congratulations to our Canteen Voucher winners:

Maddie - Year 9
Austen - Year 10

MATHEMATICS FACULTY NEWS

KMHS Celebrates a Successful Year 9 NAPLAN Numeracy Effort



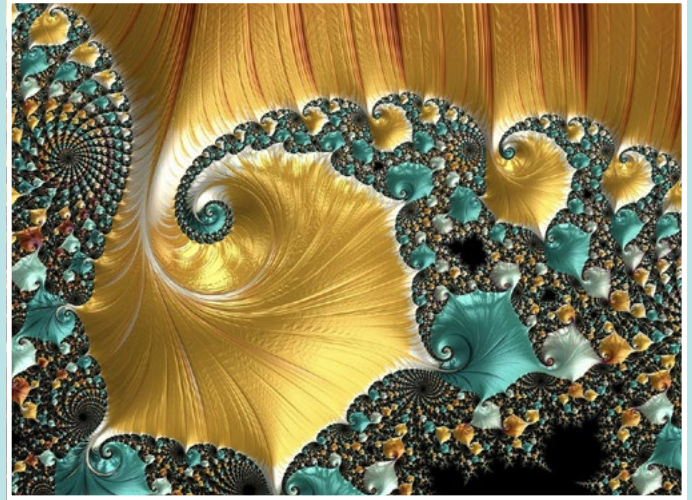
The staff and leadership team at KMHS are thrilled to commend our Year 9 students on their positive approach and dedication during this year's NAPLAN Numeracy exam.

Throughout the lead-up to the test, students demonstrated a strong commitment to their learning, engaging in revision activities and classroom discussions designed to sharpen their mathematical skills. Their focus and determination were evident as they tackled the assessment with confidence and resilience.



The school is excited to receive the results later this year, as they will provide valuable insight into how our students are progressing in their numeracy development. These results not only reflect individual achievements but also help guide future teaching strategies to ensure continued improvement and success in mathematics.

"We are incredibly proud of the way our Year 9 cohort approached the NAPLAN Numeracy test," said Donna James, Principal of KMHS. "Their hard work and dedication in preparing for the exam is a testament to the positive learning culture we are building. We look forward to seeing the results and celebrating their growth in numeracy."

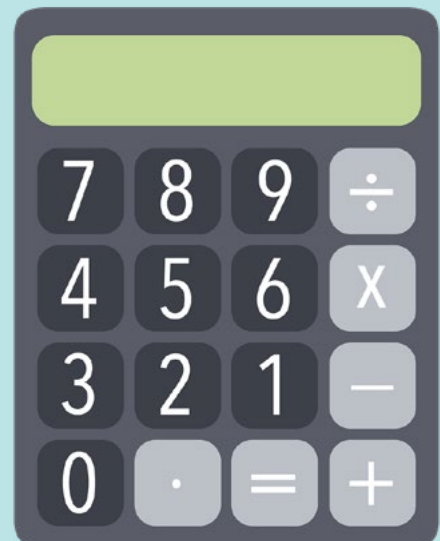


Well done, Year 7!

Congratulations, to our Year 7 students, who also progressed through the NAPLAN testing period with focus and resilience.

As a school, we remain committed to supporting every student in building strong mathematical foundations that will benefit them throughout their education and beyond.

*Mr Alex Blyth
Head Teacher Mathematics*



PBL NEWS

End-of-Term Rewards

Students will continue to receive **Positive Memos** from teaching staff for demonstrating outstanding behaviour and effort in line with our **PBL values**.



These memos accumulate and go towards qualifying students for **end-of-term rewards** e.g. **bowling, ice skating, movies** etc. This is a fantastic way to recognise and reinforce the positive behaviours contributing to a thriving school environment.

Term 1 Reward: PBL Rewards BBQ Breakfast

We're excited to announce the upcoming **PBL Rewards BBQ Breakfast** for students, which will be occurring on Wednesday the 9th of April, Week 11 at 8:00 am. We are looking forward to recognising the hard work and dedication upheld throughout the term!

How do students qualify for the PBL Rewards BBQ?

Stage 4 (Years 7 - 9):

Students, who have received **30 PBL positive entries** and have above **90% attendance**.

Stage 6 (Years 10 - 12):

Students, who have received **20 PBL positive entries** and have above **90% attendance**.

Students will be notified of their reward status via COMPASS.

PBL Faculty Awards

These awards recognise students who embody our core values within their respective classes and subjects. One student per class will be chosen for each award.

*Mr Ashley Hutchinson
CAPA Teacher and PBL Coordinator*

Below are photos of some of our award recipients, nominated by the PDHPE faculty:



School News & Organisation



KARIONG MOUNTAINS HIGH SCHOOL

KMHS PROUDLY PRESENTS: Evening of MUSIC

Featuring performances by Elective music students

Wednesday 9th April
5:00 TO 7:30 pm
IN THE SCHOOL HALL
Gold Coin donation on entry
Leukoemia Foundation
World's Greatest Shave
All funds raised will go towards The World's Greatest Shave to help fund critical blood cancer support and research.

10 Festival Drive, Mt Penang Parklands, Kariong NSW 2250

LAST DAY OF TERM 1
11 APRIL
STUDENTS RETURN ON
30 APRIL

Positive Behaviour for Learning
Congratulations, KMHS PBL AWARD RECIPIENTS TERM 1



HANDY LINKS TO RESOURCES ON THE SCHOOL WEBSITE:

- ASSESSMENT SCHEDULES
- SCHOOL POLICIES
- PARENT RESOURCES