

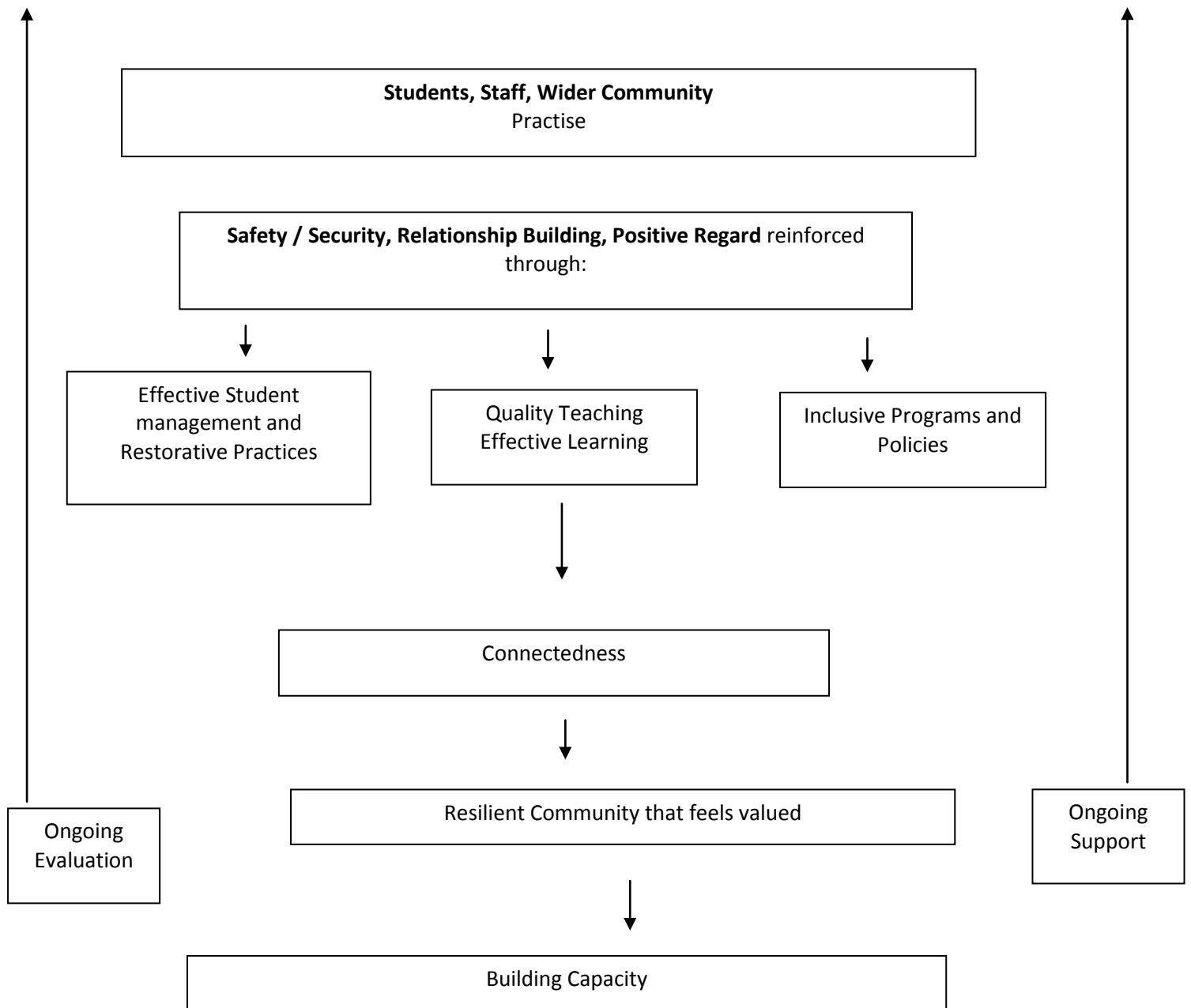
Kariong Mountains High School

Student Support Policy

“By providing a supportive and nurturing environment, schooling contributes to the development of students’ sense of self-worth, enthusiasm for learning and optimism for the future.” (Adelaide Declaration of National Goals for Schooling in the 21st Century)

Rationale:

Kariong Mountains High School student support policy is part of our whole school framework:



Safety and Security

(both physical and emotional) A sense of security and trust in others is fundamental to emotional well-being. Members of the school community need to feel safe, not just from physical harm, or threats of physical harm, but also safe to be themselves

Communication/ Relationships

It is important that all members of the school community feel that there are others whom they trust, who fulfil their particular needs, and/or share commonalities and interests with them.

Positive Regard

All members of the school community need to feel that the contributions they make are recognised, valued and acknowledged. Acknowledgement of one's achievements and culture encourages participation and confidence in all pursuits within the school setting and is important to the development of a positive self image.

The welfare of students at our school is the responsibility of the whole school community. It is imperative that all staff not only support and respond to the students in their own classrooms, but look for opportunities to acknowledge and support all students in our school. Acknowledgment may be through co-curricular activities, within the playground setting and through involvement in sport.

Procedures

Student welfare needs are met through various avenues, dependant on the issue:

Academic, social or emotional issues: the student should be referred to the Learning Support Team. If the staff member believes that there should be school counsellor involvement, a school counsellor referral form should be attached. Please refer to the Learning Support Policy for details

Behavioural Issues: the staff member should follow the procedures set out in the Behaviour Management Policy. Should the steps outlined in the Behaviour Management Policy be unsuccessful, the student should be referred to the Learning Support Team.